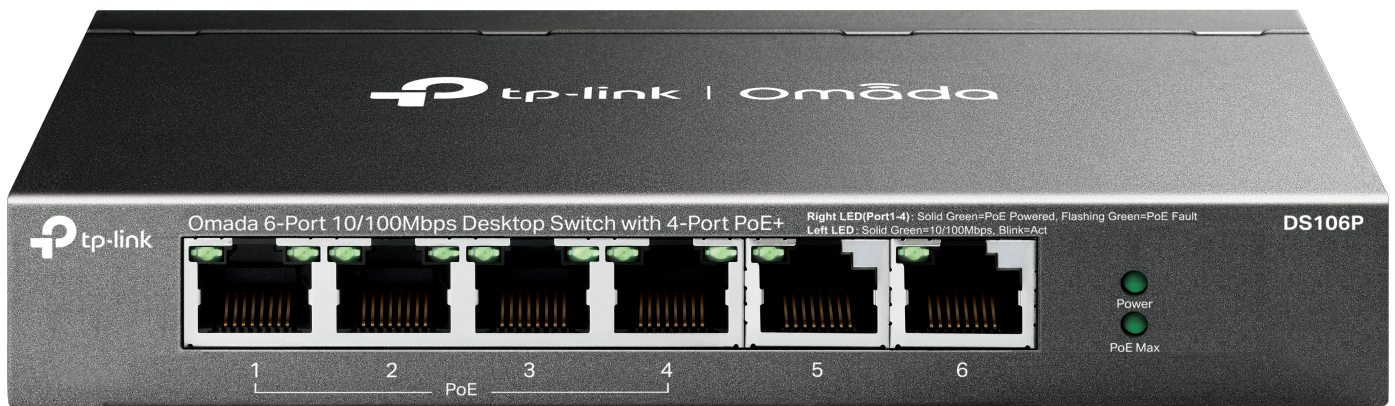


# Omada Unmanaged Switch | Datasheet

## DS106P

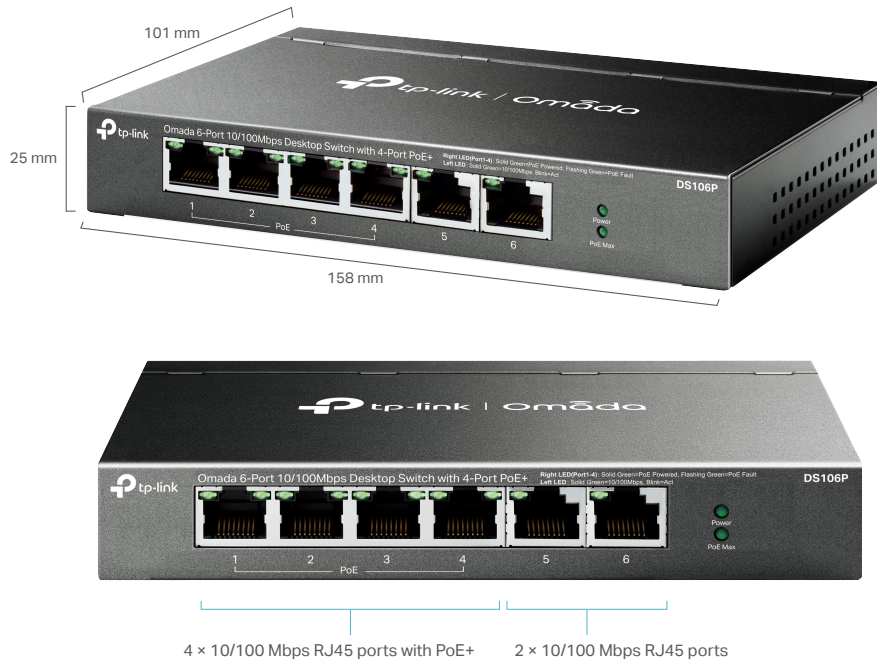
Omada 6-Port 10/100Mbps Desktop Switch with 4-Port PoE+



## Highlights

- 6× 10/100 Mbps RJ45 ports
- 4× PoE+ ports transfer data and power on individual cables
- Works with IEEE 802.3af/at compliant PDs
- Supports PoE Power up to 30 W for each PoE port
- Supports PoE Power up to 67 W for all PoE ports
- Up to 250m (820ft) data and power transmitting range under Extend Mode
- Priority Mode ensures high priority of ports 1–2 to guarantee the quality of sensitive application
- PoE Auto Recovery guarantees stable operation of PoE devices by automatically rebooting the dropped or unresponsive PD devices
- Plug and Play. No configuration or central management required.

# Product Pictures



# Specifications

Model	DS106P
Standards	IEEE 802.3i, IEEE 802.3u, IEEE 802.3x, IEEE 802.3af, IEEE 802.3at
Interface	6*10/100 Mbps RJ45 Ports with 4 PoE+ Ports(Port 1 to Port 4) AUTO Negotiation/AUTO MDI/MDIX
Network Media (Cable)	10Base-T: UTP category 3, 4, 5 cable (maximum 100 m) EIA/TIA-568 100 Ω STP (maximum 100 m) 100Base-TX: UTP category 5, 5e cable (maximum 100 m) EIA/TIA-568 100 Ω STP (maximum 100 m)
PoE Ports (RJ45)	Standard: 802.3 af/at compliant PoE Ports: Port 1- Port 4, up to 30 W per port Power Supply: 67 W
Transmission Method	Store-And-Forward
Switch Capacity	1.2 Gbps
MAC Address Table	2K
Fan Quantity	Fanless
Extend Mode	YES
Priority Mode	YES
PoE Auto Recovery	YES (For Ports 1-4)
Max Power Consumption	2.52W (220V/50Hz. no PD connected) 75.4W (220V/50Hz. with 67W PD connected)
Max Heat Dissipation	8.59 BTU/h (no PD connected) 257.11 BTU/h (with 67W PD connected)
External Power Supply	External Power Adapter (Output: 53.5 VDC / 1.31 A)
LED	Power, Link/Act, PoE Status, PoE Max
Dimensions ( W x D x H )	6.2 x 4.0 x 1.0 in. (158 x 101 x 25 mm)
Certification	FCC, CE, RoHS
Package Contents	Switch, Power Adapter, Installation Guide
Environment	Operating Temperature: 0°C~40°C (32°F~104°F) Storage Temperature: -40°C~70°C (-40°F~158°F) Operating Humidity: 10% ~ 90%RH, non-condensing Storage Humidity: 5%~90%RH, non-condensing

#### Disclaimers

The speed of the ports in extend mode will downgrade to 10 Mbps. The actual transmission distance may vary due to power consumption of PoE-powered devices or the cable quality and type.

PoE budget calculations are based on laboratory testing. Actual PoE power budget is not guaranteed and will vary as a result of client limitations and environmental factors.

Omada Unmanaged Switches do not support Omada SDN central management.

[www.tp-link.com](http://www.tp-link.com)

Specifications are subject to change without notice. All brands and product names are trademarks or registered trademarks of their respective holders. © 2023 TP-Link