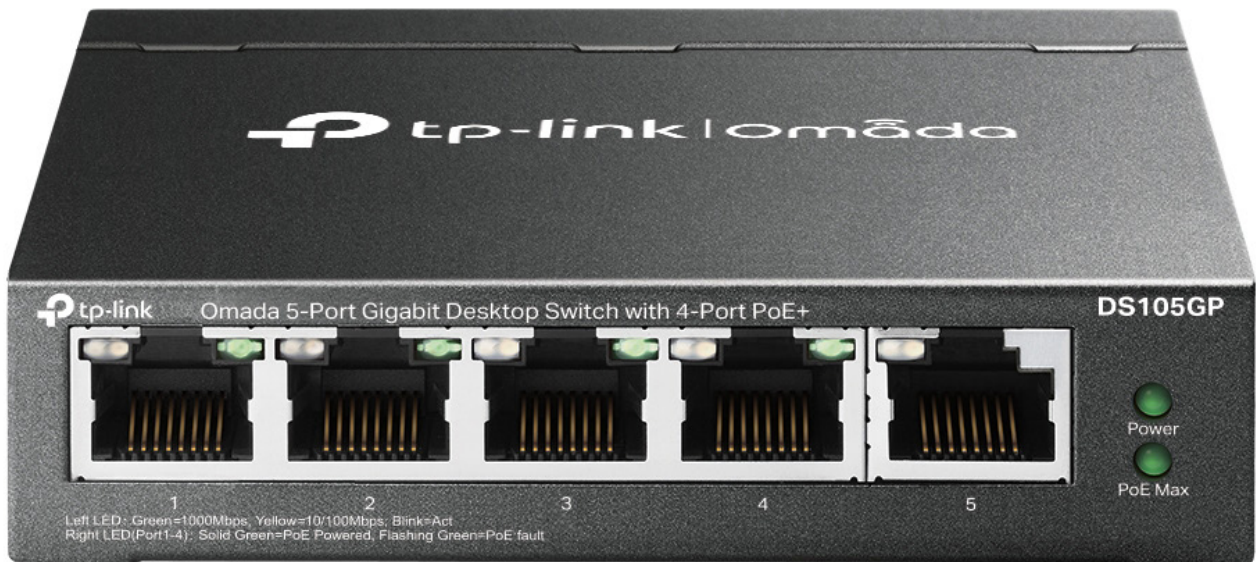


Omada Unmanaged Switch | Datasheet

DS105GP

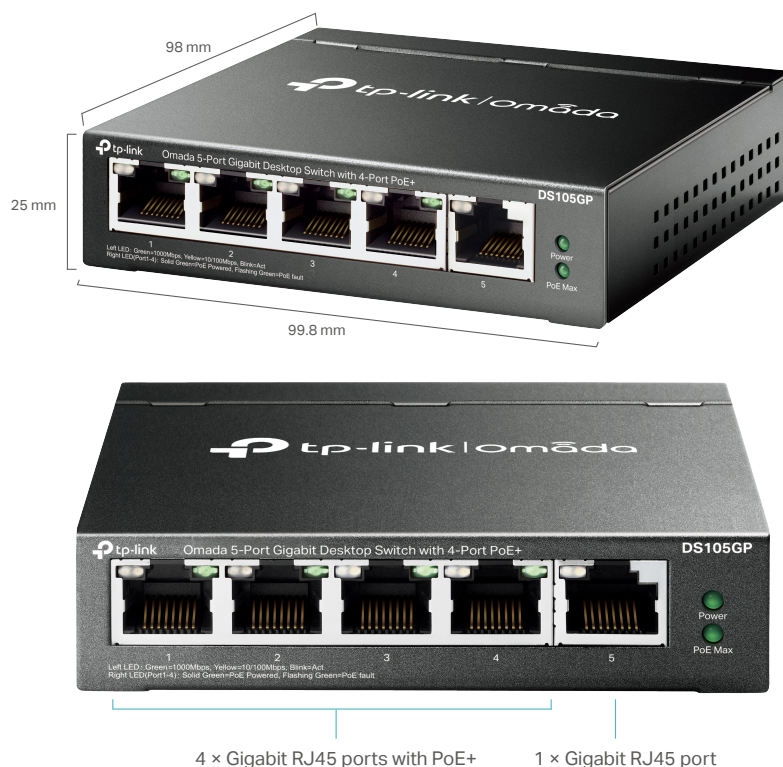
Omada 5-Port Gigabit Desktop Switch with 4-Port PoE+



Highlights

- 5× 10/100/1000 Mbps RJ45 ports
- With four PoE+ ports, transfers data and power on one single cable
- Works with IEEE 802.3af/at compliant PDs
- 802.1p/DSCP QoS enable smooth latency-sensitive traffic
- Supports PoE Power up to 30 W for each PoE port
- Supports PoE Power up to 65 W for all PoE ports
- Up to 250m (820ft) data and power transmitting range under Extend Mode
- PoE Auto Recovery guarantees stable operation of PoE devices by automatically rebooting the dropped or unresponsive PD devices
- Plug and Play. No configuration or central management required.

Product Pictures



Specifications

Model	DS105GP
Standards	IEEE 802.3i, IEEE 802.3u, IEEE 802.3x, IEEE 802.1p, IEEE 802.3af, IEEE 802.3at
Interface	5*10/100/1000 Mbps RJ45 Ports with 4 PoE+ Ports (Port 1 to Port 4) AUTO Negotiation/AUTO MDI/MDIX
Network Media (Cable)	10Base-T: UTP category 3, 4, 5 cable (maximum 100 m) EIA/TIA-568 100 Ω STP (maximum 100 m) 100Base-TX: UTP category 5, 5e cable (maximum 100 m) EIA/TIA-568 100 Ω STP (maximum 100 m) 1000BASE-T: UTP category 5, 5e, 6 or above cable (maximum 100 m) EIA/TIA-568 100Ω STP (maximum 100 m)
Max Power Consumption	3.44 W (220 V/50 Hz. no PD connected) 74.54W (220 V/50 Hz. with 65 W PD connected)
Max Heat Dissipation	11.73 BTU/h (no PD connected) 254.18 BTU/h (with 65 W PD connected)
PoE Ports (RJ45)	Standard: 802.3 af/at compliant PoE Ports: Port 1- Port 4 Power Supply: 65 W
Transmission Method	Store-And-Forward
Switch Capacity	10 Gbps
MAC Address Table	2K
Extend Mode	For Ports 1-2
PoE Auto Recovery	For Ports 1-4
Fan Quantity	Fanless
External Power Supply	External Power Adapter (Output: 53.5 VDC / 1.31 A)
LED	Power, Link/Act, PoE Status, PoE Max
Dimensions (W x D x H)	3.9 x 3.9 x 1.0 in. (99.8 x 98 x 25 mm)
Certification	FCC, CE, RoHS
Package Contents	Switch, Power Adapter, Installation Guide

Disclaimers

The speed of the ports in extend mode will downgrade to 10 Mbps. The actual transmission distance may vary due to power consumption of PoE-powered devices or the cable quality and type.

PoE budget calculations are based on laboratory testing. Actual PoE power budget is not guaranteed and will vary as a result of client limitations and environmental factors.

Omada Unmanaged Switches do not support Omada SDN central management.

www.tp-link.com

Specifications are subject to change without notice. All brands and product names are trademarks or registered trademarks of their respective holders. © 2023 TP-Link