

# GE6512FF

PN: BTVGCFTBHBFFCN01B  
EAN: 6422956013134

## Specifications

Battery Model	GE6512FF
Voltage	12V
Power (1,67V/cell@15 min)	202.3 W/cell
Type	Valve regulated lead-acid (VRLA), 6 cell, GEL - maintenance free
Designed Floating Life	Up to 12 years (25o C) Eurobat (20o C) : 10 - 12 years standard commercial
Nominal Operating Temp. Range	25°C ± 3°C
Terminal	T6
<b>Construction</b>	
Container & Cover	ABS
Safety valve	EPDR
Terminal	Copper
Internal Resistance	Full charged at 25°C ≤ 5.8mΩ
Self Discharge (20°C)	3% of capacity declined per month
<b>Capacity affected by temperature</b>	
40°C	102%
25°C	100%
0°C	85%
<b>Charge Voltage (25°C)</b>	
Cycle use	14.4V - 15.0V (-30mV/°C), max. Current: 19.5A
Float use	13.60V - 13.8V (-20mV/°C)
<b>Physical</b>	
Without Terminal	347 x 168 x 168 mm
With Terminal	347 x 168 x 176mm
Product Weight	19.1 Kg



Completely sealed and maintenance-free



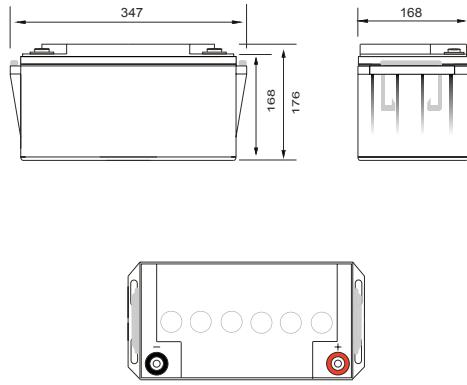
Excellent charging and re-charging



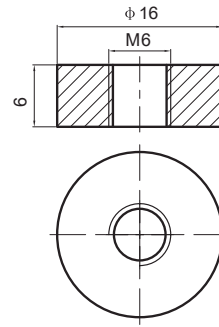
Long Life & low self-discharge design

- Gel deep cycle technology
- Excellent charging and re-charging
- Stable and reliable for long-term
- Low self-discharge
- Floating & standby use: 12 years
- More than 400 cycles at 100% DOD
- Multiple Application: Alarm and Security Systems, Cable Television, Communication Equipment, Power Tools, Control Equipment, Medical Equipment, UPS, Toys

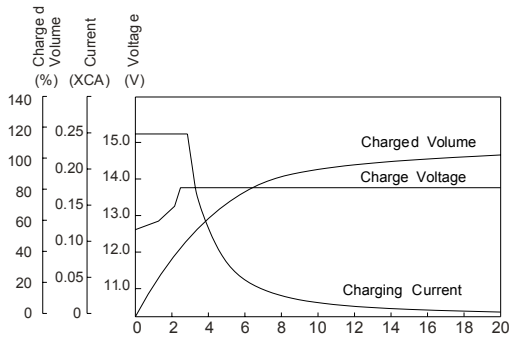
## Dimensions (mm)



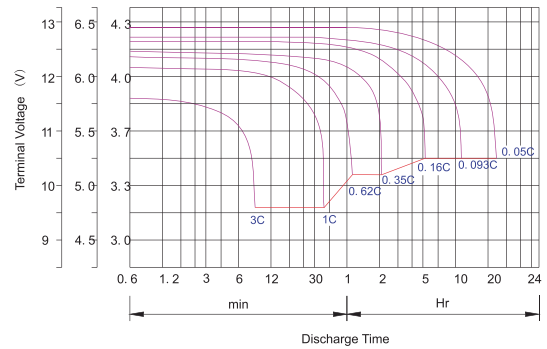
## T6 Terminal Dimensions (mm)



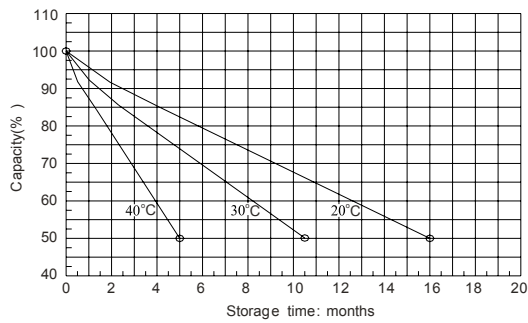
## Float Charging Characteristics



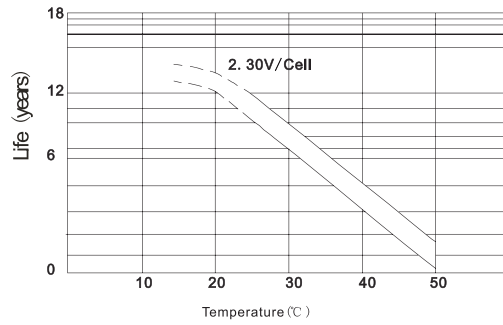
## Discharge Characteristics



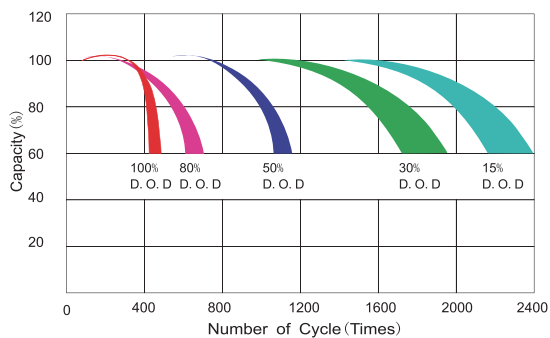
## Self Discharge Characteristics



## Effect of Temperature on Long Term Float Life



## Cycle Life in Relation to Depth of Discharge





## Constant Current Discharge Characteristics (A), 25°C

F.V/Ti	15min	30min	1Hr	2Hr	3Hr	5Hr	8Hr	10Hr	20Hr
1.85V/cell	88.9	62.5	35.6	23.6	16.8	11.6	7.9	6.2	3.1
1.80V/cell	93.8	64.2	36.2	23.8	17.0	11.6	8.0	6.3	3.2
1.75V/cell	97.8	65.7	36.5	24.0	17.1	11.7	8.1	6.5	3.3
1.70V/cell	102.1	66.9	37.0	24.1	17.2	11.7	8.1	6.5	3.4
1.67V/cell	104.7	67.5	37.3	24.2	17.2	11.7	8.2	6.6	3.5
1.60V/cell	110.5	69.0	37.6	24.3	17.3	11.8	8.2	6.7	3.7






## Constant Wattage Discharge Characteristics (W), 25°C

F.V/Ti	15min	30min	1Hr	2Hr	3Hr	5Hr	8Hr	10Hr	20Hr
1.85V/cell	172.6	124.8	71.6	47.3	33.8	23.3	15.9	12.6	6.3
1.80V/cell	181.8	128.2	72.6	47.8	34.1	23.4	16.1	12.8	6.5
1.75V/cell	189.3	131.1	73.1	48.0	34.3	23.4	16.2	13.0	6.7
1.70V/cell	197.5	133.4	74.0	48.4	34.5	23.5	16.4	13.3	7.0
1.67V/cell	202.3	134.5	74.4	48.5	34.5	23.5	16.4	13.3	7.0
1.60V/cell	213.2	137.4	75.0	48.7	34.7	23.6	16.5	13.4	7.4



## Logistics

	Carton Box Size	360 x 174 x 205 mm
	Pieces in the Carton Box	1 pc / ctn
	Net & Gross weight / CTN	N.W. / G.W.: 19.1 kg / 19.6 kg

